

UCG200-12

12V 200AH

Deep Cycle Gel



Ultracell®

Quality in Every Lead Acid

UCG200-12



Physical Specification

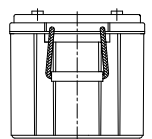
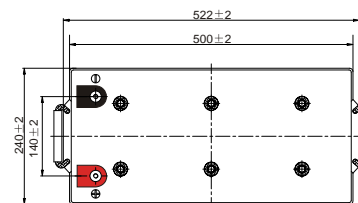
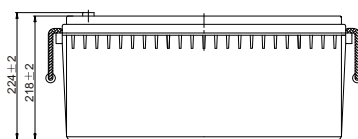
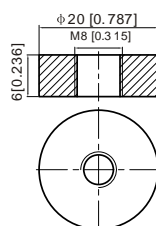
Part Number	UCG200-12
Length	522 ± 2 mm
Width	240 ± 2 mm
Container Height	218 ± 2 mm
Total Height (with terminal)	224 ± 2 mm
Approx Weight	62.9 kg

Specifications

	Nominal Voltage	12V	
	Nominal Capacity 20HR)	200.0AH	
Terminal Type	Standard Terminal	F11	
	Optional Terminal	-	
Container Material	Standard Option	ABS	
	Flame Retardant Option (FR)	ABS(UL94:VO)	
Rated Capacity	20hr, 1.80V/cell, 25°C	200.0 AH/10.0A	
	10hr, 1.75V/cell, 25°C	186.0 AH/18.6A	
	5hr, 1.75V/cell, 25°C	160.0 AH/32.0A	
	1hr, 1.70V/cell, 25°C	110.0 AH/110.0A	
Max Discharge Current	1800A (5s)		
Internal Resistance	3.24mΩ		
Discharge Characteristics	Operating Temp. Range	Discharge: -20 ~ 60°C	
		Charge: 0 ~ 50°C	
		Storage: -20 ~ 50°C	
	Nominal Operating Temp. Range	25 ± 3°C	
	Cycle Use	Initial Charging Current less than -A.Voltage 14.4V ~ 15.0V Temp. Coefficient -30mV/°C	
	Standby Use	No limit on Initial Charging Current Voltage 13.5V ~ 13.8V Temp. Coefficient -20mV/°C	
Capacity affect by Temperature	40°C	103%	
	25°C	100%	
	0°C	86%	
Design Floating Life at 20°C	15 Years		
Self Discharge	Ultracell batteries may be stored for up to 9 months at 25°C(77°F) and then a refresh charge is required. For higher temperatures the time interval will be shorter.		

Dimensions

F11 Terminal





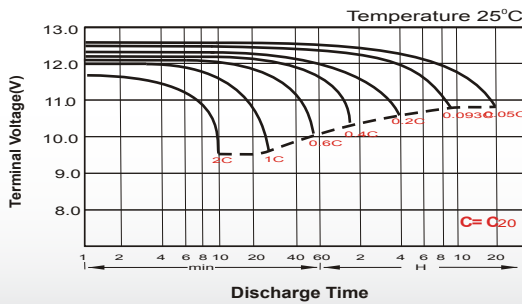
Constant Current Discharge (Amperes) at 20°C

F.V/Time	20 min	30 min	45 min	1h	2h	3h	4h	5h	6h	7h	8h	9h	10h	20h
1.85V/cell	169.2	132.8	101.3	84.8	53.8	41.0	34.0	29.3	25.3	22.4	20.2	18.5	17.5	9.60
1.80V/cell	193.8	148.4	111.7	93.6	58.2	43.9	36.0	30.8	26.6	23.5	21.2	19.4	18.2	10.0
1.75V/cell	217.8	163.2	120.8	100.2	61.7	46.4	37.7	32.0	27.5	24.3	21.9	20.0	18.6	10.2
1.70V/cell	234.6	174.8	128.3	106.0	65.4	48.3	39.0	33.0	28.5	25.1	22.5	20.5	19.0	10.3
1.67V/cell	244.2	181.6	132.8	110.0	67.1	49.9	39.9	33.7	28.9	25.5	22.9	20.8	19.3	10.4
1.60V/cell	264.6	194.4	142.7	116.8	69.8	51.9	41.4	34.7	29.6	26.0	23.3	21.2	19.6	10.6

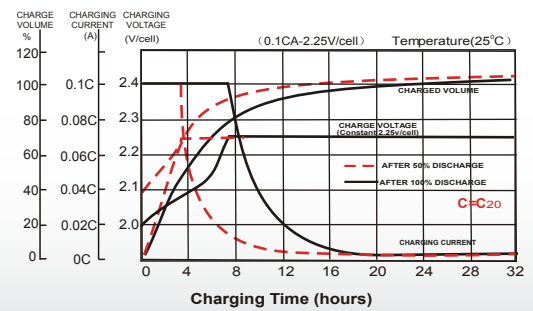
Constant Power Discharge (Watts) at 20°C

F.V/Time	20 min	30 min	45 min	1h	2h	3h	4h	5h	6h	7h	8h	9h	10h	20h
1.85V/cell	323.8	255.9	196.5	165.1	105.1	80.3	66.8	57.9	50.1	44.5	40.2	36.8	34.8	19.2
1.80V/cell	366.1	283.3	215.1	181.3	113.3	85.8	70.5	60.6	52.4	46.4	42.0	38.6	36.3	19.9
1.75V/cell	406.9	308.7	230.8	193.1	119.6	90.4	73.6	62.7	54.1	47.9	43.3	39.7	37.0	20.3
1.70V/cell	433.5	327.8	243.3	203.1	126.2	93.9	75.9	64.5	55.9	49.4	44.5	40.7	37.8	20.5
1.67V/cell	446.2	337.0	250.2	209.6	128.8	96.4	77.5	65.7	56.7	50.0	45.1	41.1	38.2	20.7
1.60V/cell	478.1	357.3	266.8	221.3	133.4	99.8	80.2	67.5	57.8	51.0	45.8	42.0	38.9	21.0

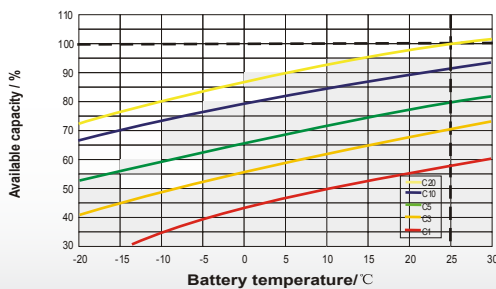
Discharge Characteristics



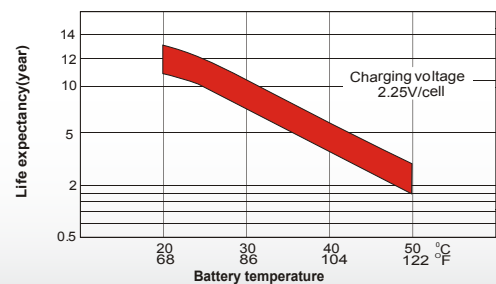
Charging Characteristics



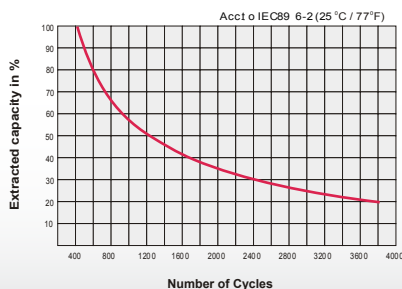
Temperature Effects in Relation to Battery Capacity



Effect of Temperature on Long Term Float Life



Cycle Life in Relation to Depth of Discharge



General Relation of Capacity VS. Storage Time

